



# **KÜTAHYA TİCARET BORSASI**

## **2019 YILI**

### **İSTATİSTİKLERİ**



## 2015-2019 YILLARI ARASI İŞLEM HACMİ(TL) VE DEĞİŞİM ORANI

YIL	2015	2016	DEĞİŞİM (%)	2017	DEĞİŞİM (%)	2018	DEĞİŞİM (%)	2019	DEĞİŞİM (%)
İŞLEM HACMİ	540.523.012,61	538.860.494,85	-0,3	613.105.637,95	13,8	637.382.401,30	4,0	702.176.353,18	10,2





## 2017-2018-2019 YILLARINDA İŞLEM GÖREN BAZI ÜRÜNLERİN ANALİZİ

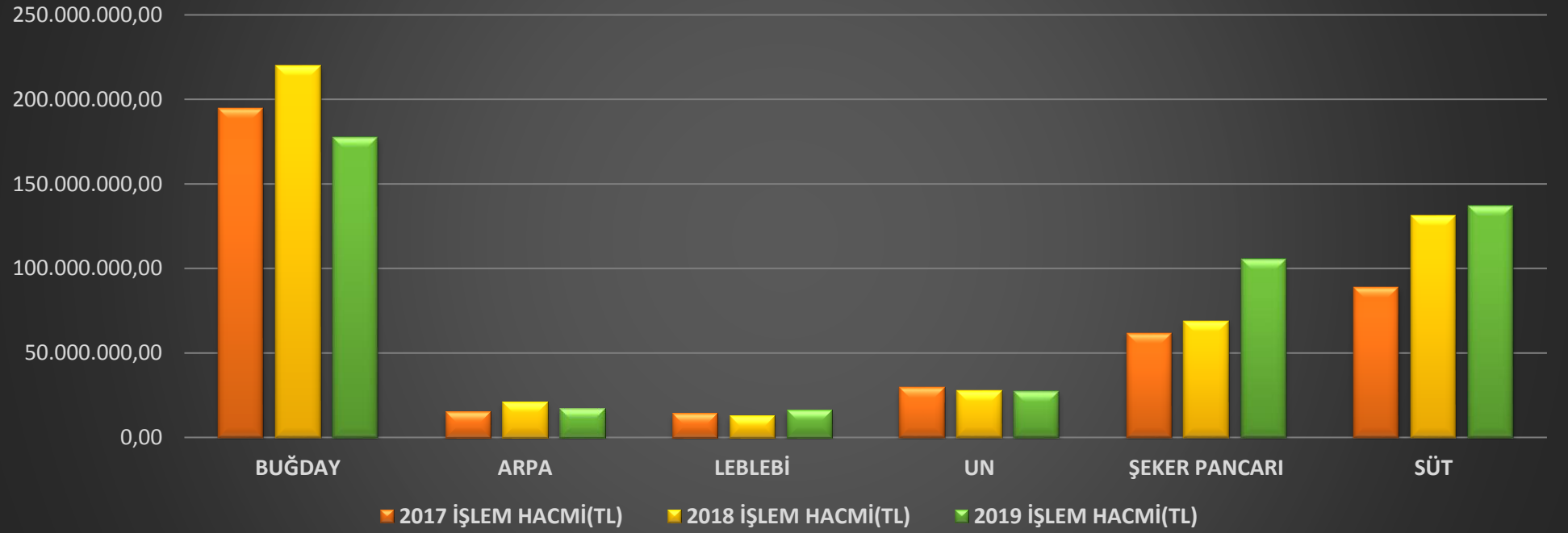
YIL	2017		2018		2019	
	MİKTAR(KG)	İŞLEM HACMİ(TL)	MİKTAR(KG)	İŞLEM HACMİ(TL)	MİKTAR(KG)	İŞLEM HACMİ(TL)
<b>BUĞDAY</b>	225.611.824	194.993.166,07	225.586.165	219.807.410,15	134.137.306	177.750.060,45
<b>ARPA</b>	18.005.074	15.301.834,38	23.485.010	21.164.961,97	14.753.793	17.162.341,91
<b>LEBLEBİ</b>	1.052.837	14.375.131,57	1.120.988	12.910.814,51	1.541.012	16.278.204,19
<b>UN</b>	28.896.267	29.612.447,26	22.173.381	27.494.993,28	14.448.078	27.339.665,55
<b>ŞEKER PANCARI</b>	287.135.170	61.659.242,51	293.516.671	68.933.189,80	317.620.057	105.553.534,77
<b>SÜT</b>	84.356.755	88.853.978,06	99.447.544	131.477.144,46	84.399.302	136.912.274,12



YIL	2017		2018		2019	
	MİKTAR (KG)	İŞLEM HACMİ (TL)	MİKTAR (KG)	İŞLEM HACMİ (TL)	MİKTAR (KG)	İŞLEM HACMİ (TL)
<b>VIŞNE</b>	12.161.442	29.341.632,97	18.705.923	32.385.584,07	6.834.468	18.972.981,59
<b>KİRAZ</b>	2.301.469	4.097.166,49	7.916.322	8.574.353,10	4.388.048	10.273.634,66
<b>MISIR</b>	284.758	403.808,57	2.130.649	2.105.922,35	6.155.342	11.910.671,33
<b>AYÇİÇEĞİ</b>	4.201.392	7.573.480,62	1.990.029	5.501.526,51	3.595.917	9.355.235,83
<b>NOHUT</b>	615.471	4.051.331,43	554.421	5.519.528,89	589.097	2.336.264,83

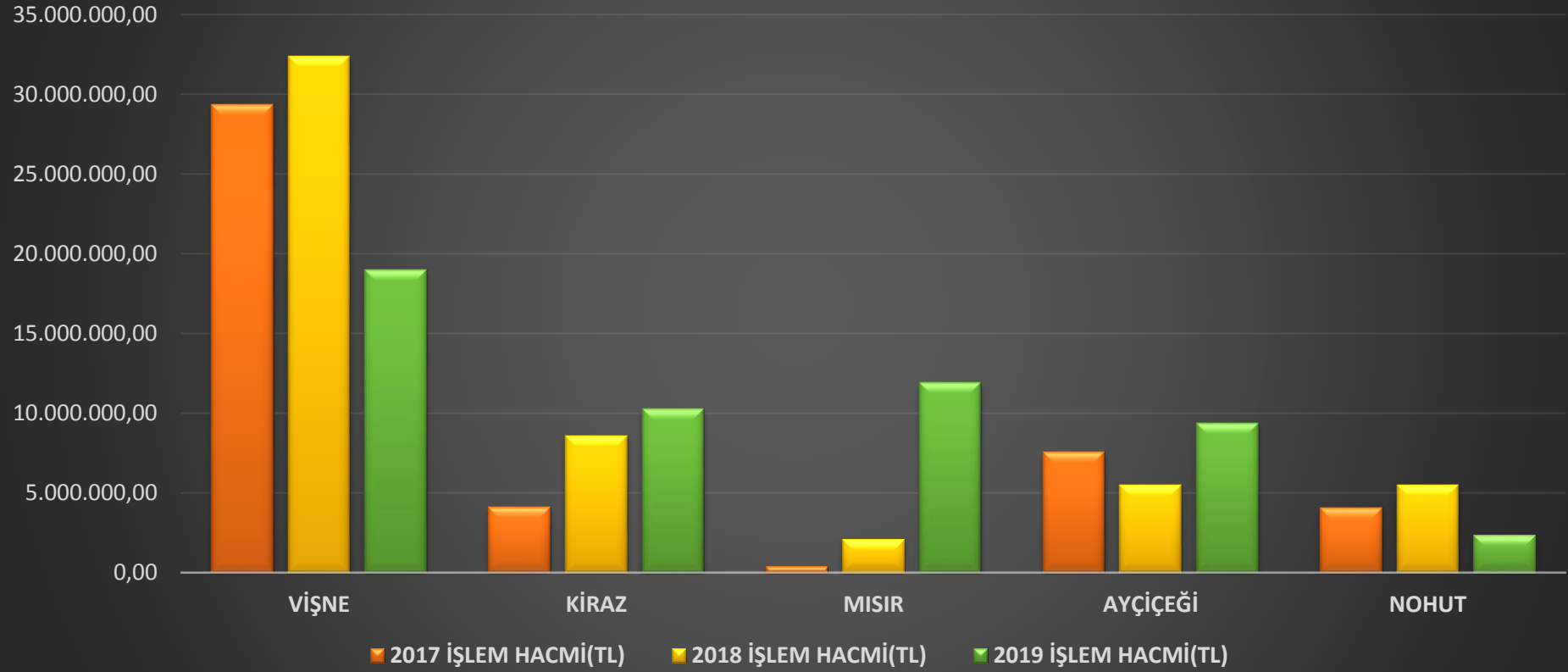


## Son 3 Yılın İşlem Hacmi





## Son 3 Yılın İşlem Hacmi



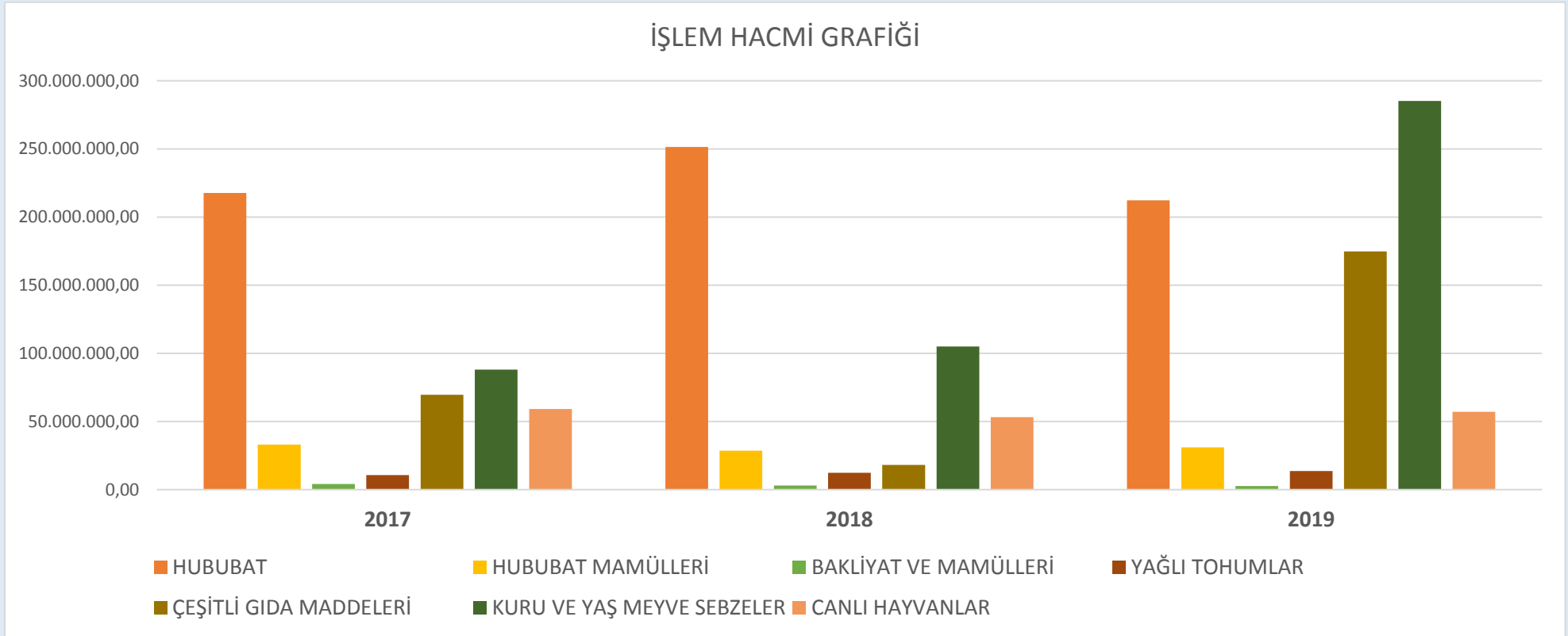


## ANA BAŞLIKLAR ALTINDA İŞLEM HACİMLERİ

MADDE	2017	2018	2019
<b>HUBUBAT</b>	217.689.924,67	251.448.754,00	212.304.903,35
<b>HUBUBAT MAMÜLLERİ</b>	33.043.502,86	28.612.835,00	31.007.078,77
<b>BAKLİYAT VE MAMÜLLERİ</b>	4.121.867,58	3.024.634,00	2.695.088,56
<b>YAĞLI TOHUMLAR</b>	10.648.059,63	12.256.621,00	13.615.101,47
<b>ÇEŞİTLİ GIDA MADDELERİ</b>	69.521.656,00	18.139.416,00	174.801.031,18
<b>KURU VE YAŞ MEYVE SEBZELER</b>	88.098.819,51	105.019.206,00	285.184.339,50
<b>CANLI HAYVANLAR</b>	59.162.642,19	53.223.213,00	57.060.628,17



## ANA BAŞLIK ALTINDA İŞLEM HACMİ GRAFİĞİ





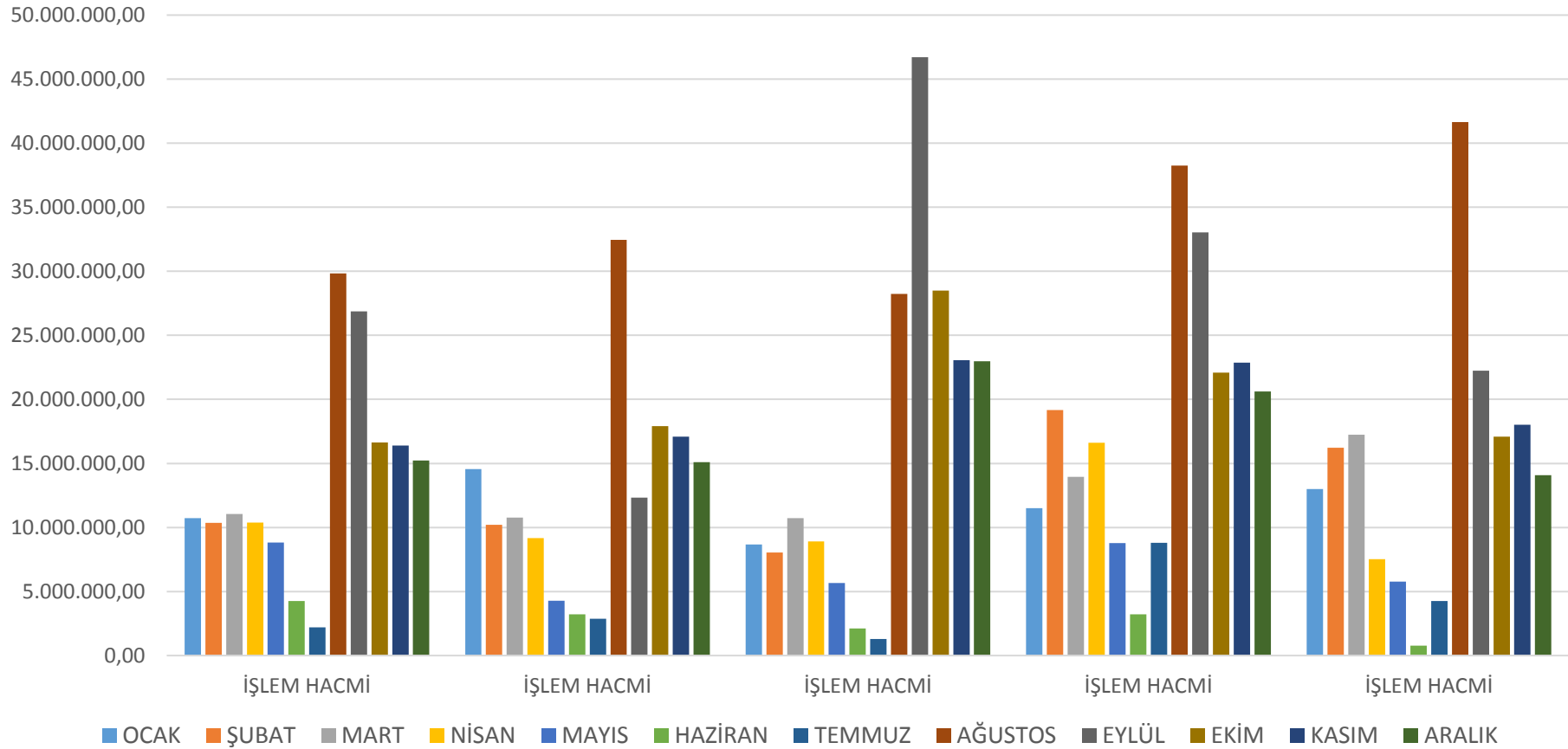


## BUĞDAYDA SON 5 YILIN AY BAZINDA MİKTAR VE İŞLEM HACİMLERİ

AY/YIL	2015		2016		2017		2018		2019	
	MİKTAR	İŞLEM HACMİ	MİKTAR	İŞLEM HACMİ	MİKTAR	İŞLEM HACMİ	MİKTAR	İŞLEM HACMİ	MİKTAR	İŞLEM HACMİ
<b>OCAK</b>	12.769.642	10.720.061,55	17.872.067	14.561.223,16	10.144.333	8.663.320,31	12.696.324	11.510.684,38	11.477.336	13.003.346,46
<b>ŞUBAT</b>	12.186.083	10.351.860,77	12.612.626	10.207.739,68	9.251.526	8.050.541,14	20.146.029	19.158.949,27	13.235.194	16.229.020,67
<b>MART</b>	13.001.037	11.056.186,33	13.105.783	10.768.324,74	11.823.863	10.735.563,56	14.565.623	13.950.520,51	13.857.743	17.234.181,99
<b>NİSAN</b>	12.646.117	10.383.304,54	11.166.917	9.160.838,99	9.707.931	8.905.159,15	17.133.019	16.605.124,09	6.096.940	7.516.841,94
<b>MAYIS</b>	10.844.017	8.824.013,05	5.226.103	4.273.177,23	6.004.504	5.672.757,48	8.905.265	8.770.127,81	4.292.472	5.780.961,30
<b>HAZİRAN</b>	5.269.538	4.267.948,03	3.831.125	3.225.901,60	2.269.604	2.117.043,57	3.274.086	3.229.070,45	497.037	771.235,30
<b>TEMMUZ</b>	2.860.733	2.202.370,10	3.519.610	2.877.994,68	1.407.143	1.283.857,86	9.343.611	8.799.359,68	3.228.097	4.255.318,93
<b>AĞUSTOS</b>	40.701.905	29.840.083,33	39.741.830	32.443.714,15	32.821.257	28.236.434,06	41.350.048	38.243.593,28	30.697.183	41.654.419,82
<b>EYLÜL</b>	37.824.122	26.869.489,17	15.483.132	12.338.166,32	55.748.293	46.714.622,75	35.126.250	33.046.229,78	16.208.096	22.235.981,81
<b>EKİM</b>	22.655.785	16.631.470,79	22.297.510	17.902.154,27	34.156.566	28.493.360,79	20.761.007	22.092.054,22	12.495.336	17.094.374,22
<b>KASIM</b>	21.667.670	16.392.468,69	21.325.568	17.088.344,45	26.602.015	23.068.214,16	21.689.812	22.872.968,37	12.512.063	18.021.361,94
<b>ARALIK</b>	19.504.086	15.220.199,74	18.792.864	15.101.520,78	25.565.357	22.975.401,53	19.669.871	20.618.914,21	9.554.259	14.090.171,07

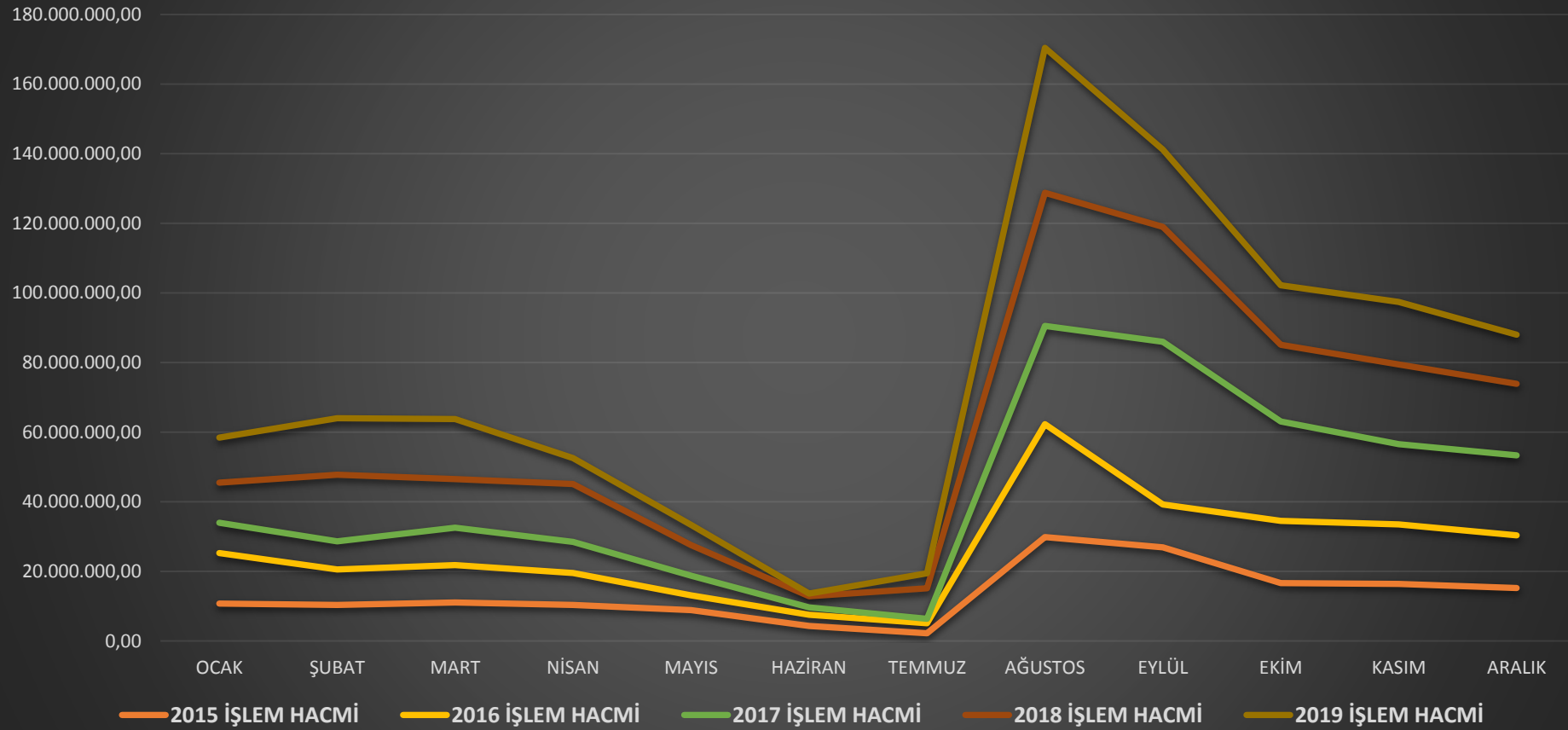


## BUĞDAYDA SON 5 YILIN İŞLEM MİKTARI (KG) GRAFIĞI





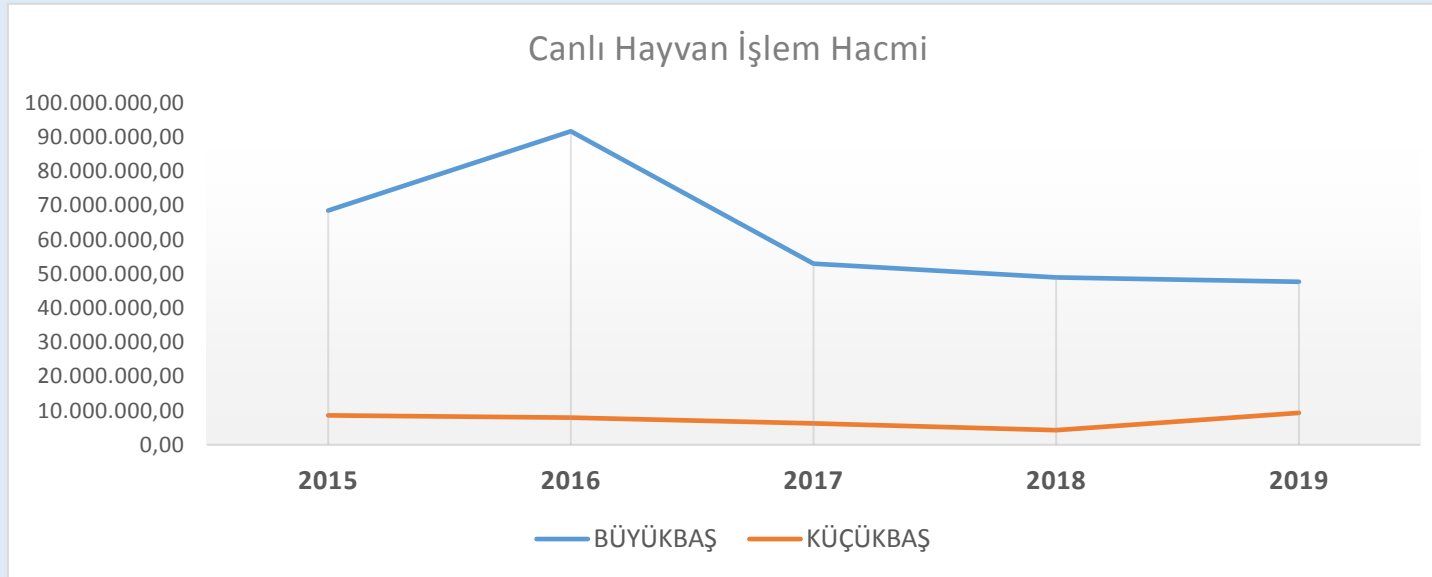
## BUĞDAYDA SON 5 YILIN İŞLEM HACMİ (TL) GRAFİĞİ





## CANLI HAYVAN BAZINDA SON 5 YILIN İŞLEM HACMİ VE GRAFİĞİ

	2015	2016	2017	2018	2019
BÜYÜKBAŞ	68.511.020,70	91.654.666,89	52.924.371,41	48.952.942,92	47.658.411,54
KÜÇÜKBAŞ	8.549.058,28	7.978.770,39	6.238.270,78	4.270.269,60	9.325.002,76



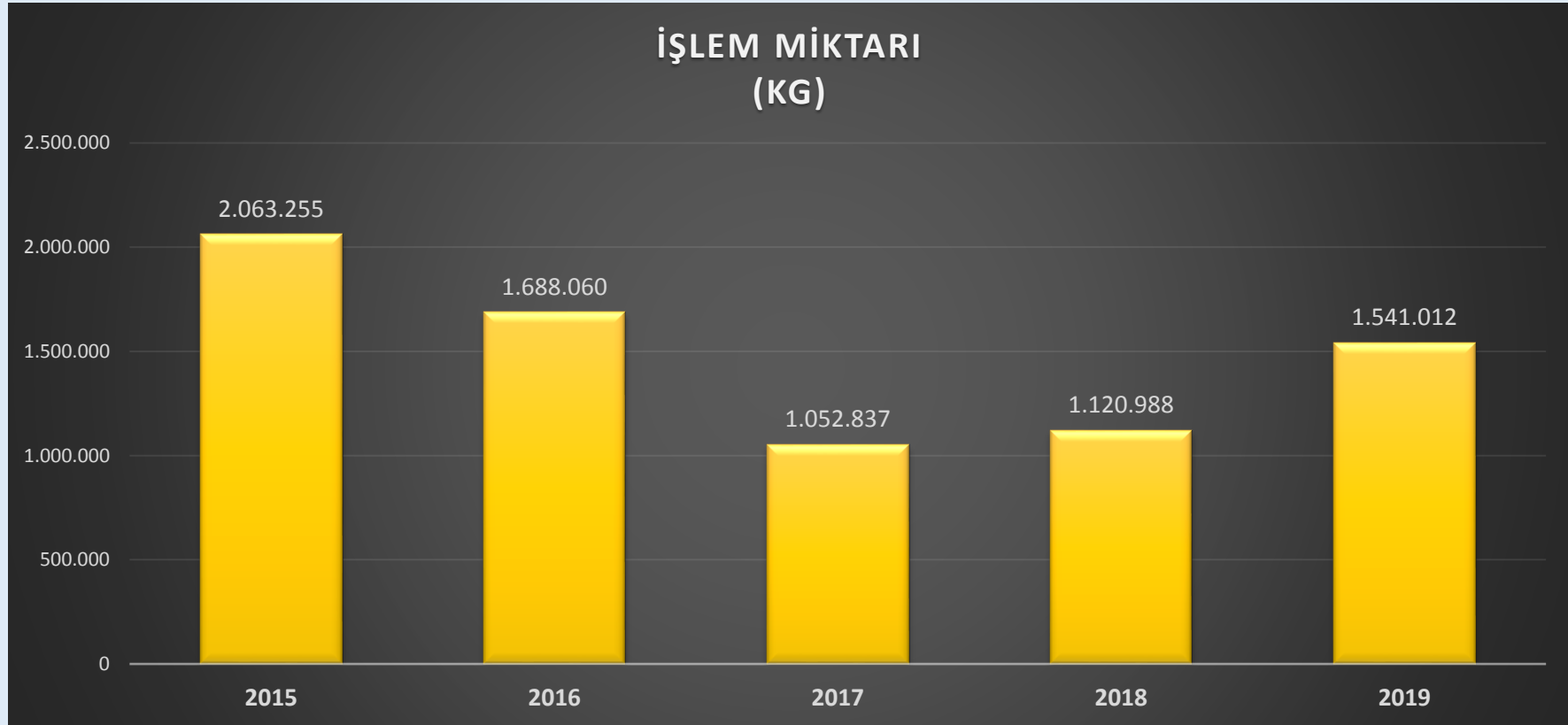


## SON 5 YILIN LEBLEBİ İŞLEM HACMİ VE MİKTARI

YIL	İŞLEM MİKTARI (KG)	İŞLEM HACMİ (TL)	ORTALAMA FİYAT
2015	2.063.255	14.423.421,80	6,99
2016	1.688.060	15.290.359,30	9,06
2017	1.052.837	14.375.131,57	13,65
2018	1.120.988	12.910.814,51	11,52
2019	1.541.012	16.278.204,19	10,56



## SON 5 YILIN LEBLEBİ İŞLEM MİKTARI GRAFIĞI



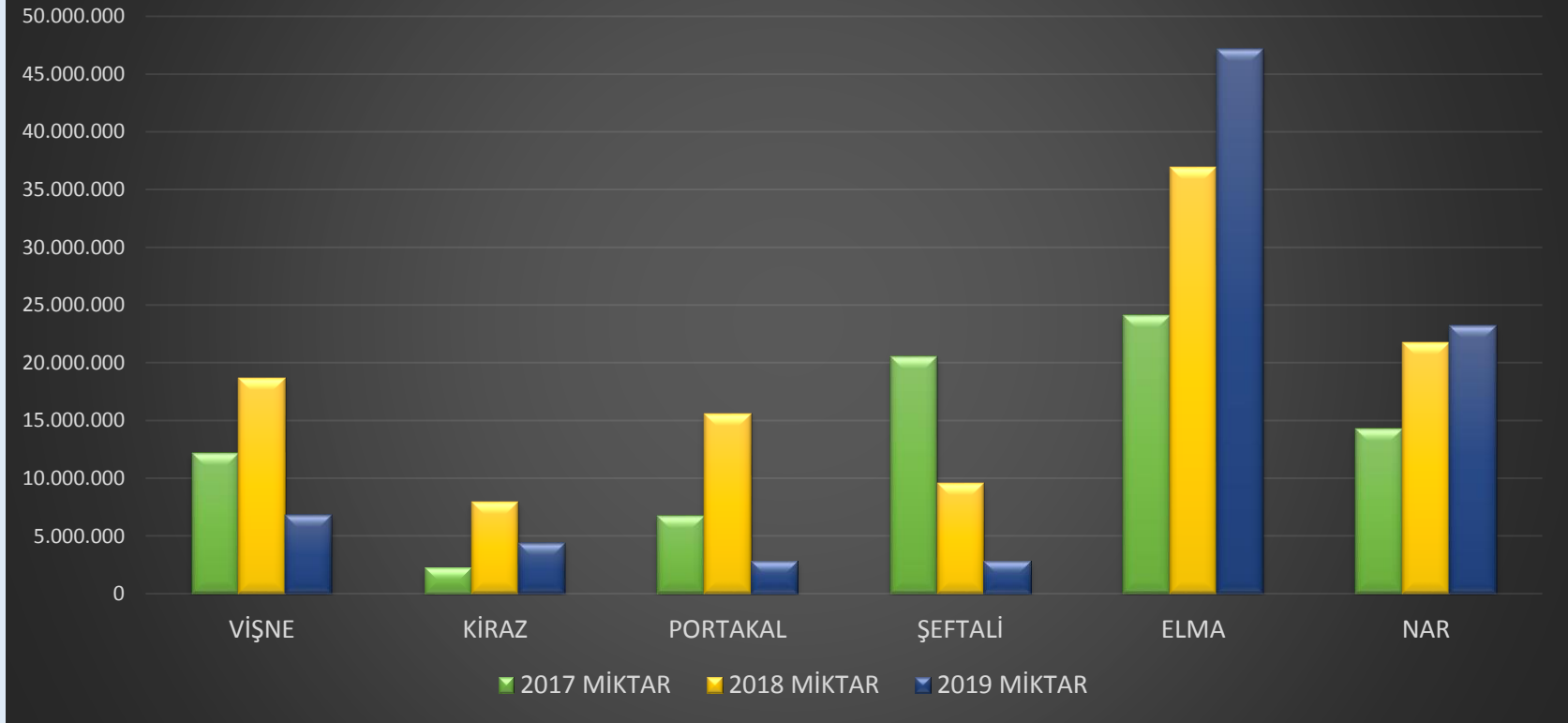


## EN ÇOK İŞLEM GÖREN MEYVELERİN İŞLEM MİKTARI VE HACİMLERİ

ÜRÜN	2017		2018		2019	
	MİKTAR	İŞLEM HACMİ	MİKTAR	İŞLEM HACMİ	MİKTAR	İŞLEM HACMİ
<b>VIŞNE</b>	12.161.442	29.341.632,97	18.705.923	32.385.584,07	6.834.468	18.972.981,59
<b>KİRAZ</b>	2.301.469	4.097.166,49	7.916.322	8.574.353,10	4.388.048	10.273.634,66
<b>PORTAKAL</b>	6.744.712	3.750.637,67	15.582.435	5.356.961,13	2.836.301	1.087.903,28
<b>ŞEFTALİ</b>	20.477.387	8.602.693,08	9.567.031	4.505.635,67	2.849.474	2.564.578,25
<b>ELMA</b>	24.112.719	12.095.285,59	36.912.906	16.668.920,42	47.130.771	31.957.334,47
<b>NAR</b>	14.295.935	6.607.506,29	21.724.783	15.596.464,14	23.191.325	18.809.495,53



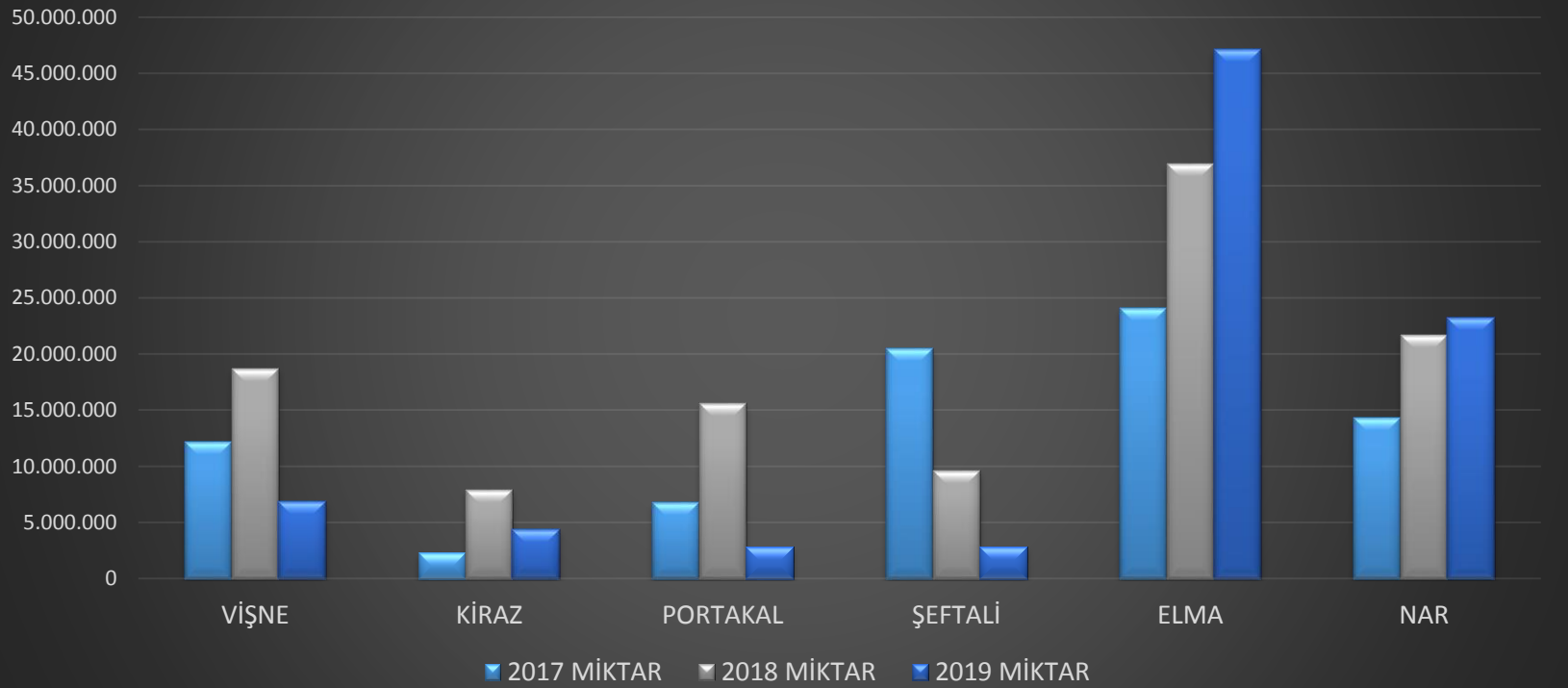
## İŞLEM HACMİ







## İŞLEM MİKTARI



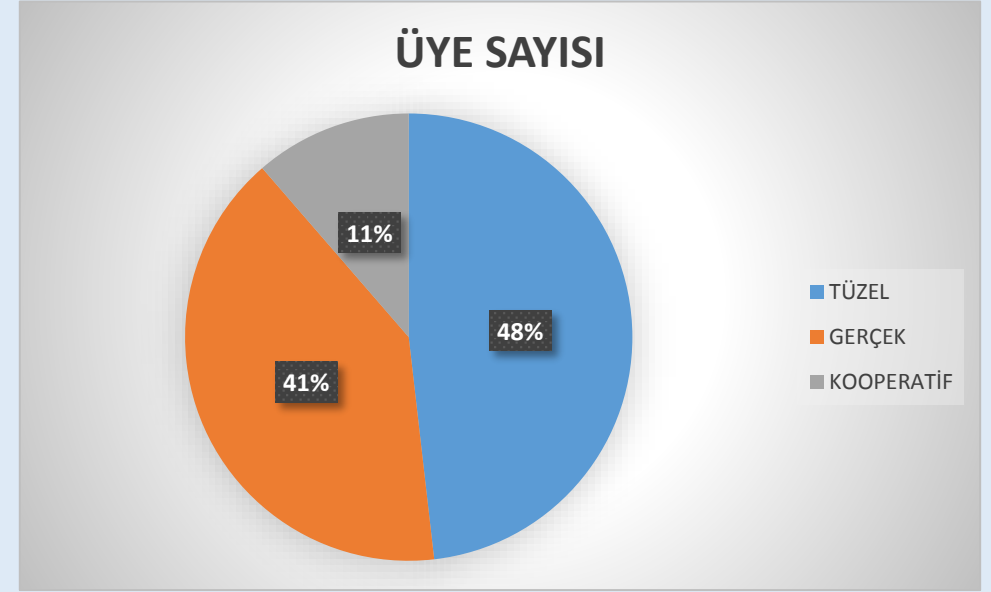


# 2019 YILI ÜYE İSTATİSTİKLERİ



## 2019 YILI ÜYE SAYILARI DAĞILIMI

ÜYE TİPİ	ÜYE SAYISI	ORAN
<b>TÜZEL</b>	106	%48,18
<b>GERÇEK</b>	89	%40,45
<b>KOOPERATİF</b>	25	%11,37
<b>TOPLAM</b>	<b>220</b>	





## 2019 YILI AYLIK YAPILAN TESCİL İSTATİSTİKLERİ

OCAK	322
ŞUBAT	336
MART	336
NİSAN	283
MAYIS	260
HAZİRAN	163
TEMMUZ	249
AĞUSTOS	427
EYLÜL	363
EKİM	308
KASIM	342
ARALIK	328
<b>TOPLAM</b>	<b>3717</b>

