



KÜTAHYA TİCARET BORSASI

2020 YILI

İSTATİSTİKLERİ



2016-2020 YILLARI ARASI İŞLEM HACMİ (TL) VE DEĞİŞİM ORANI

YIL	2016	2017	DEĞİŞİM (%)	2018	DEĞİŞİM (%)	2019	DEĞİŞİM (%)	2020	DEĞİŞİM (%)
İŞLEM HACMİ	538.860.494,85	613.105.637,95	13,8	637.382.401,30	4,0	702.176.353,18	10,2	994.778.239,23	41,7

YILLAR BAZINDA İŞLEM HACMİ





2018-2019-2020 YILLARINDA İŞLEM GÖREN BAZI ÜRÜNLERİN ANALİZİ

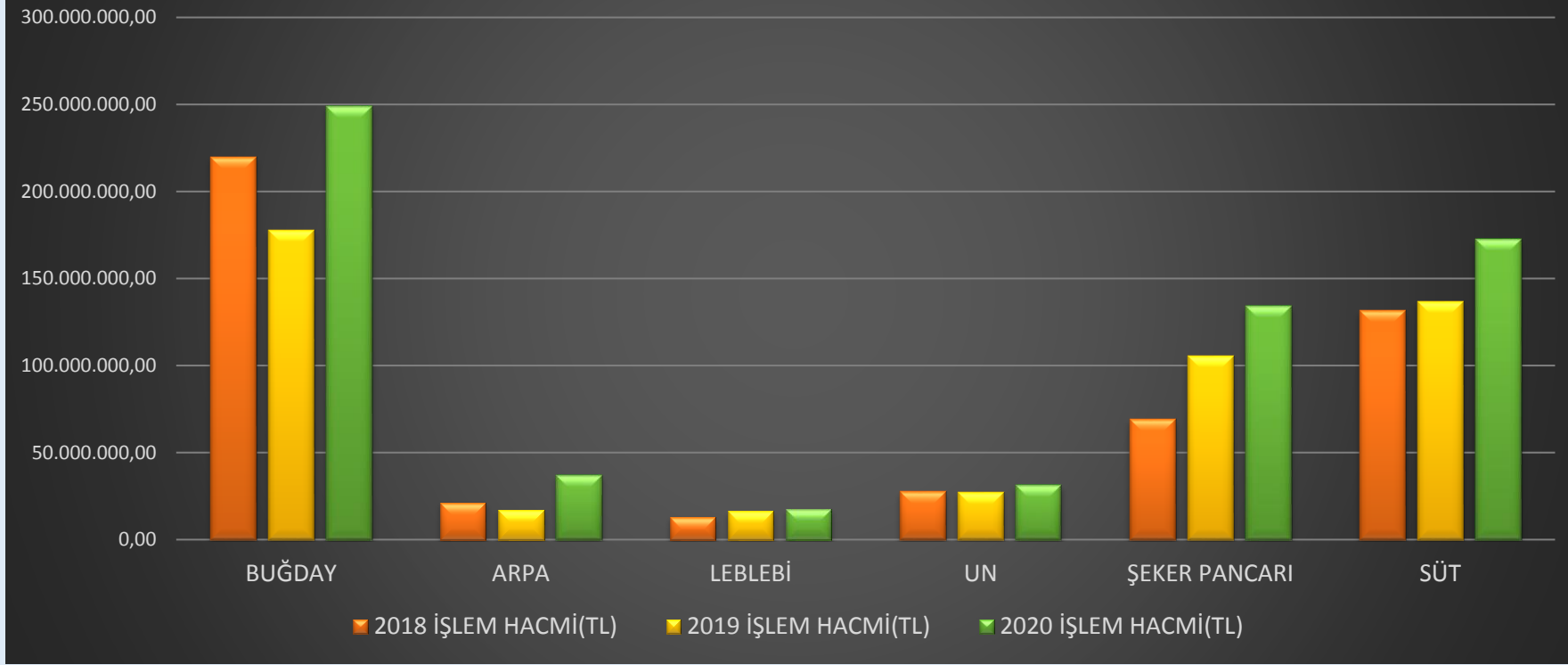
YIL	2018		2019		2020	
	MİKTAR(KG)	İŞLEM HACMİ(TL)	MİKTAR(KG)	İŞLEM HACMİ(TL)	MİKTAR(KG)	İŞLEM HACMİ(TL)
BUĞDAY	225.586.165	219.807.410,15	134.137.306	177.750.060,45	140.561.687	249.096.135,99
ARPA	23.485.010	21.164.961,97	14.753.793	17.162.341,91	25.426.113	37.036.784,17
LEBLEBİ	1.120.988	12.910.814,51	1.541.012	16.278.204,19	1.542.765	17.715.437,36
UN	22.173.381	27.494.993,28	14.448.078	27.339.665,55	13.403.595	31.389.903,56
ŞEKER PANCARI	293.516.671	68.933.189,80	317.620.057	105.553.534,77	380.590.867	134.289.183,80
SÜT	99.447.544	131.477.144,46	84.399.302	136.912.274,12	83.845.286	172.700.983,31



YIL	2018		2019		2020	
	MİKTAR(KG)	İŞLEM HACMİ(TL)	MİKTAR(KG)	İŞLEM HACMİ(TL)	MİKTAR(KG)	İŞLEM HACMİ(TL)
VIŞNE	18.705.923	32.385.584,07	6.834.468	18.972.981,59	19.812.847	57.524.342,97
KİRAZ	7.916.322	8.574.353,10	4.388.048	10.273.634,66	10.042.662	24.745.151,93
MISIR	2.130.649	2.105.922,35	6.155.342	11.910.671,33	4.436.365	19.329.929,88
AYÇİÇEĞİ	1.990.029	5.501.526,51	3.595.917	9.355.235,83	3.037.030	11.687.125,26
NOHUT	554.421	5.519.528,89	589.097	2.336.264,83	1.300.567	6.014.949,85

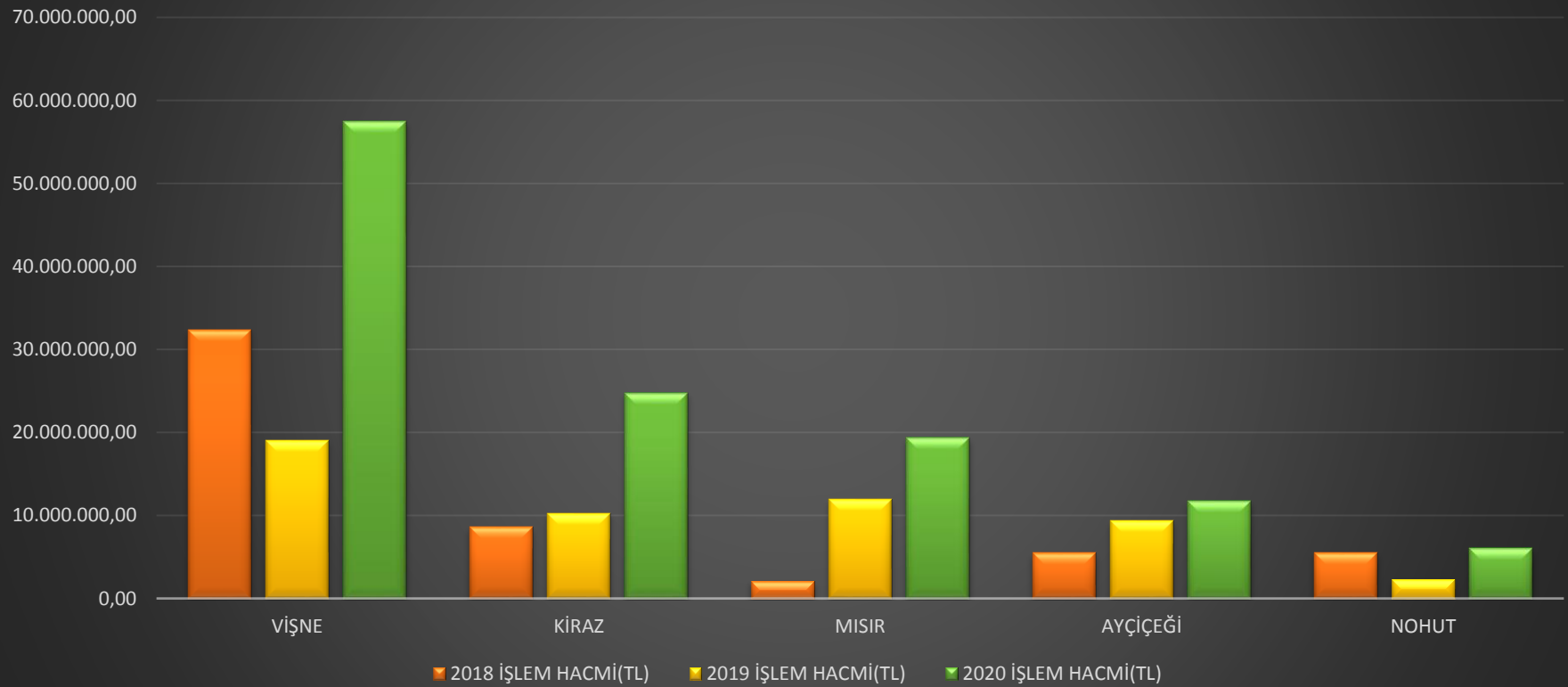


Son 3 Yılın İşlem Hacmi





Son 3 Yılın İşlem Hacmi



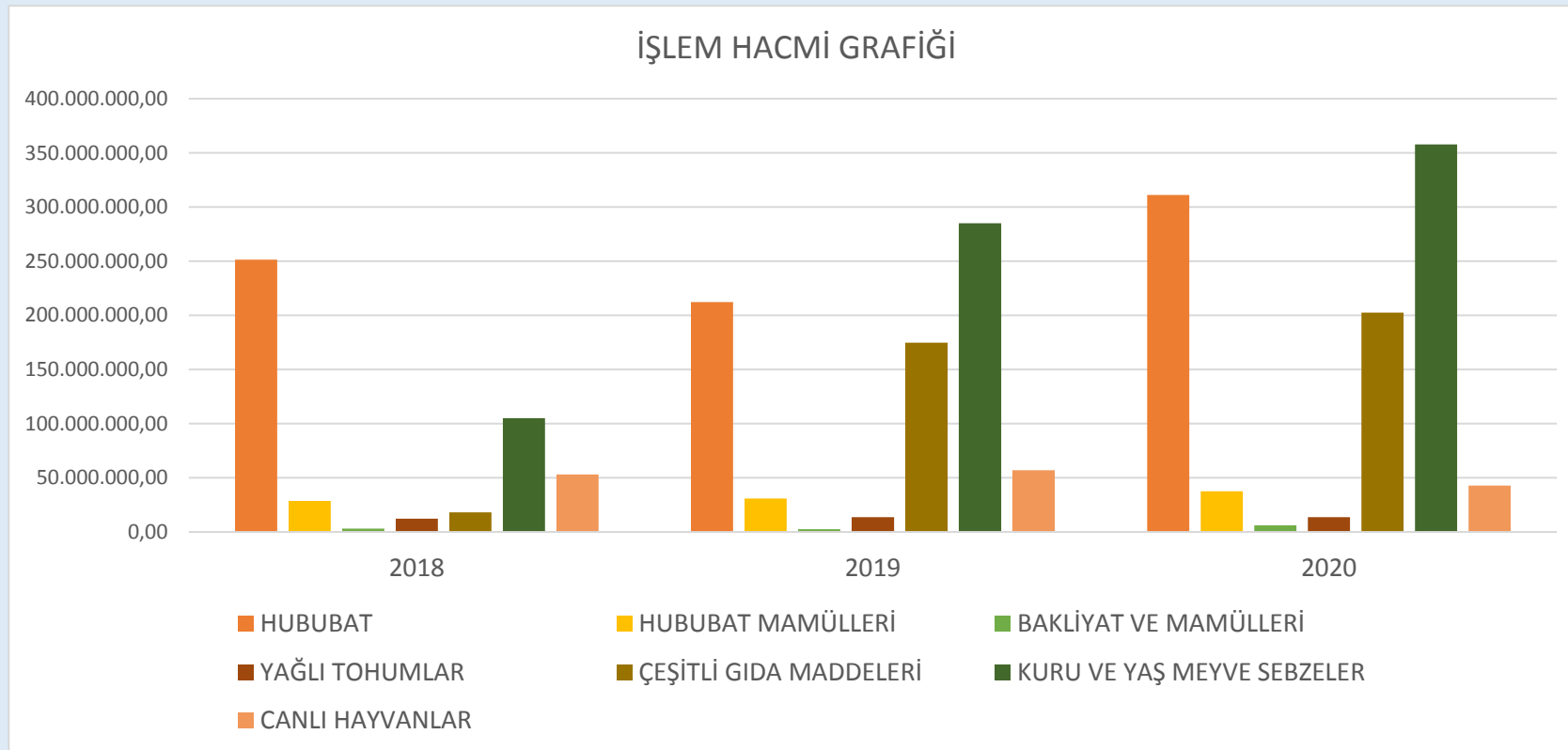


ANA BAŞLIKLAR ALTINDA İŞLEM HACİMLERİ

BAŞLIK	2018	2019	2020
HUBUBAT	251.448.754,00	212.304.903,35	311.134.622,20
HUBUBAT MAMÜLLERİ	28.612.835,00	31.007.078,77	37.454.272,98
BAKLİYAT VE MAMÜLLERİ	3.024.634,00	2.695.088,56	6.046.029,49
YAĞLI TOHUMLAR	12.256.621,00	13.615.101,47	13.773.264,87
ÇEŞİTLİ GIDA MADDELERİ	18.139.416,00	174.801.031,18	202.639.475,98
KURU VE YAŞ MEYVE SEBZELER	105.019.206,00	285.184.339,50	357.901.475,31
CANLI HAYVANLAR	53.223.213,00	57.060.628,17	42.863.735,07



ANA BAŞLIK ALTINDA İŞLEM HACMİ GRAFİĞİ



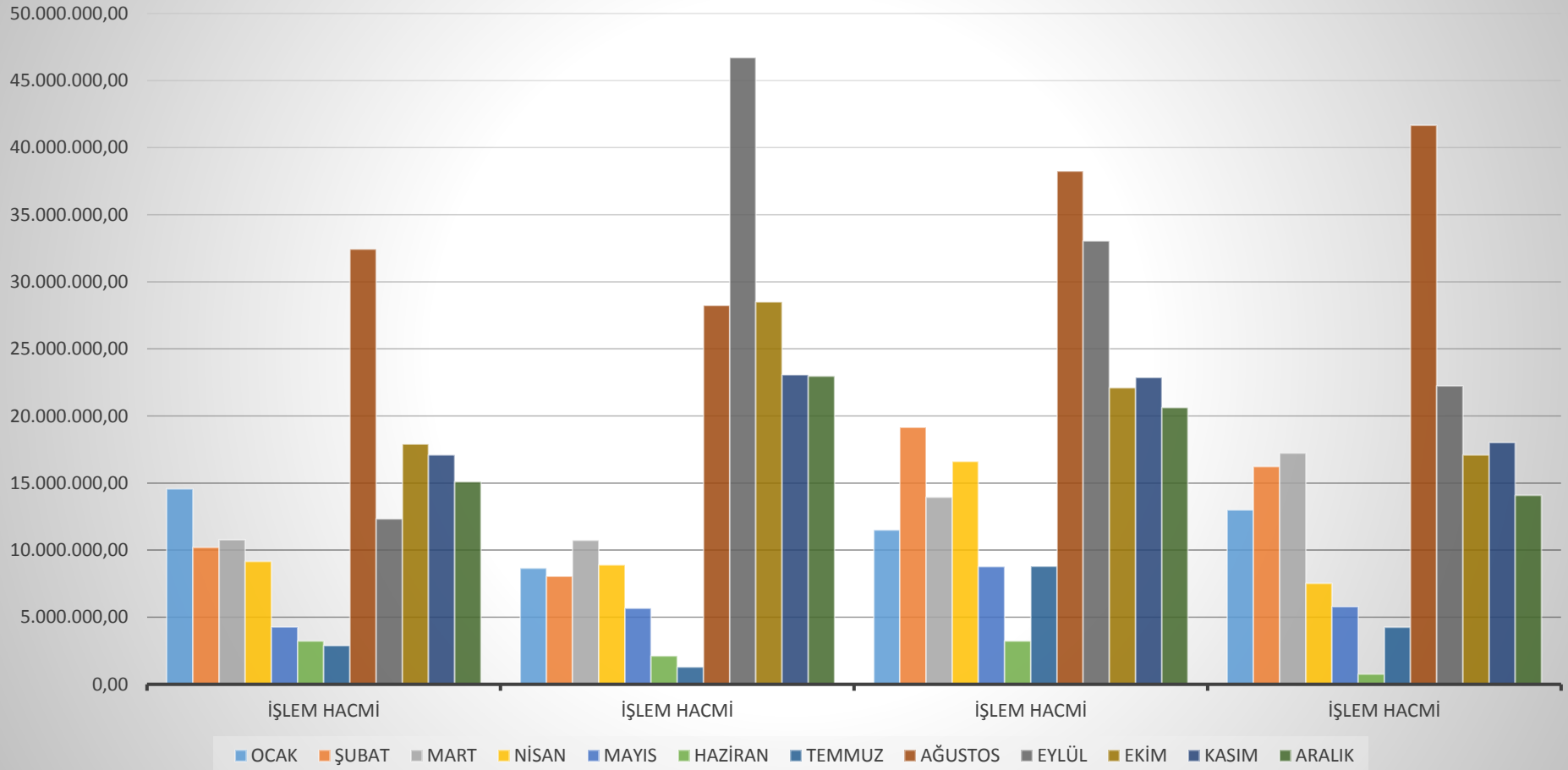


BUĞDAYDA SON 5 YILIN AY BAZINDA MİKTAR VE İŞLEM HACİMLERİ

AY/YIL	2016		2017		2018		2019		2020	
	MİKTAR	İŞLEM HACMİ	MİKTAR	İŞLEM HACMİ	MİKTAR	İŞLEM HACMİ	MİKTAR	İŞLEM HACMİ	MİKTAR	İŞLEM HACMİ
OCAK	17.872.067	14.561.223,16	10.144.333	8.663.320,31	12.696.324	11.510.684,38	11.477.336	13.003.346,46	12.645.584	20,297,346,71
ŞUBAT	12.612.626	10.207.739,68	9.251.526	8.050.541,14	20.146.029	19.158.949,27	13.235.194	16.229.020,67	5.133.727	8,221,100,20
MART	13.105.783	10.768.324,74	11.823.863	10.735.563,56	14.565.623	13.950.520,51	13.857.743	17.234.181,99	7.920.056	12,603,614,57
NİSAN	11.166.917	9.160.838,99	9.707.931	8.905.159,15	17.133.019	16.605.124,09	6.096.940	7.516.841,94	8.666.644	14,025,525,88
MAYIS	5.226.103	4.273.177,23	6.004.504	5.672.757,48	8.905.265	8.770.127,81	4.292.472	5.780.961,30	8.860.905	14,802,857,25
HAZİRAN	3.831.125	3.225.901,60	2.269.604	2.117.043,57	3.274.086	3.229.070,45	497.037	771.235,30	2.683.314	4,311,454,71
TEMMUZ	3.519.610	2.877.994,68	1.407.143	1.283.857,86	9.343.611	8.799.359,68	3.228.097	4.255.318,93	2.644.502	4,340,229,57
AĞUSTOS	39.741.830	32.443.714,15	32.821.257	28.236.434,06	41.350.048	38.243.593,28	30.697.183	41.654.419,82	21.240.026	38,338,334,85
EYLÜL	15.483.132	12.338.166,32	55.748.293	46.714.622,75	35.126.250	33.046.229,78	16.208.096	22.235.981,81	17.138.640	31,010,532,92
EKİM	22.297.510	17.902.154,27	34.156.566	28.493.360,79	20.761.007	22.092.054,22	12.495.336	17.094.374,22	11.746.609	21,940,011,41
KASIM	21.325.568	17.088.344,45	26.602.015	23.068.214,16	21.689.812	22.872.968,37	12.512.063	18.021.361,94	9.823.091	19,851,774,20
ARALIK	18.792.864	15.101.520,78	25.565.357	22.975.401,53	19.669.871	20.618.914,21	9.554.259	14.090.171,07	32.058.589	59,353,353,72

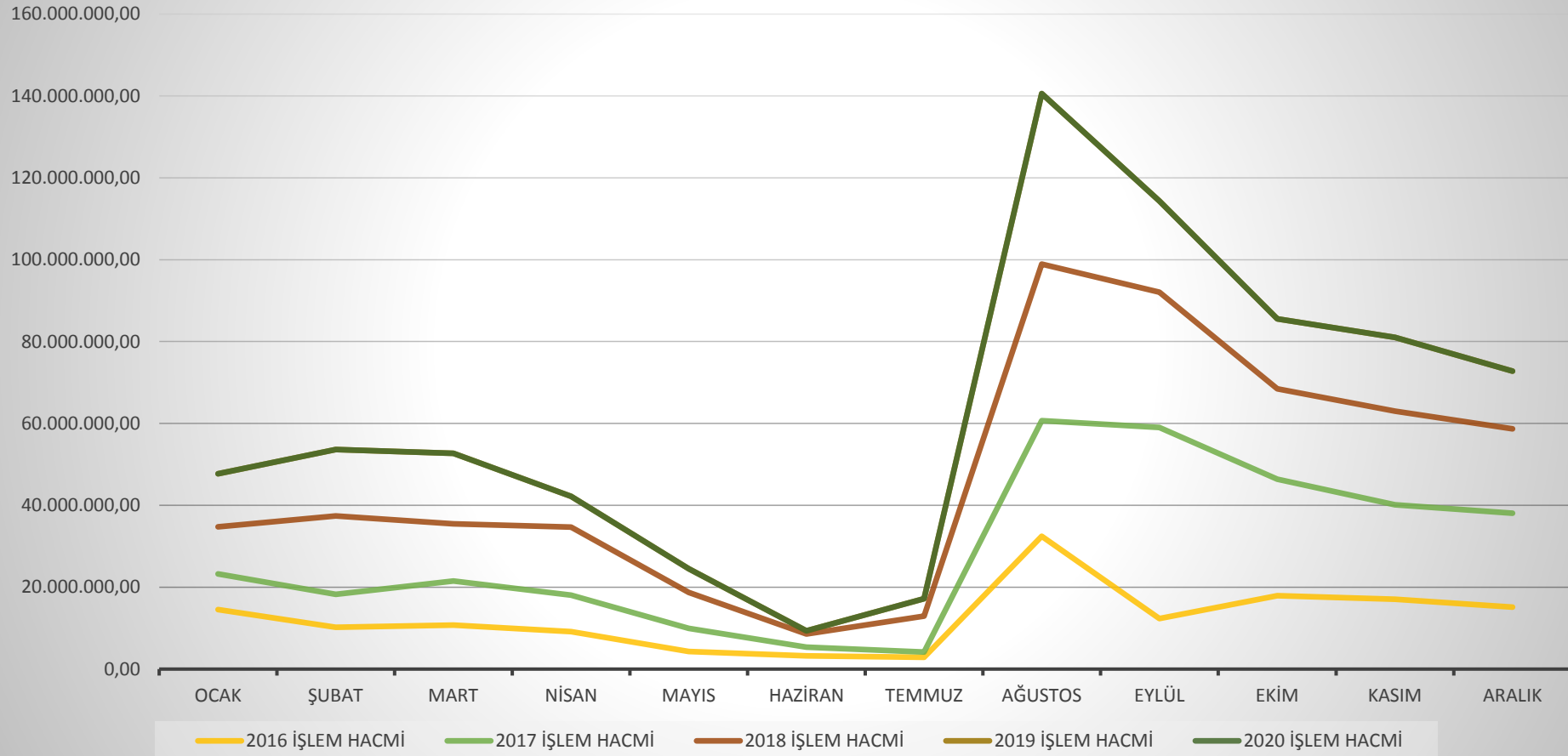


Buğdayda Son 5 Yılın İşlem Miktarı





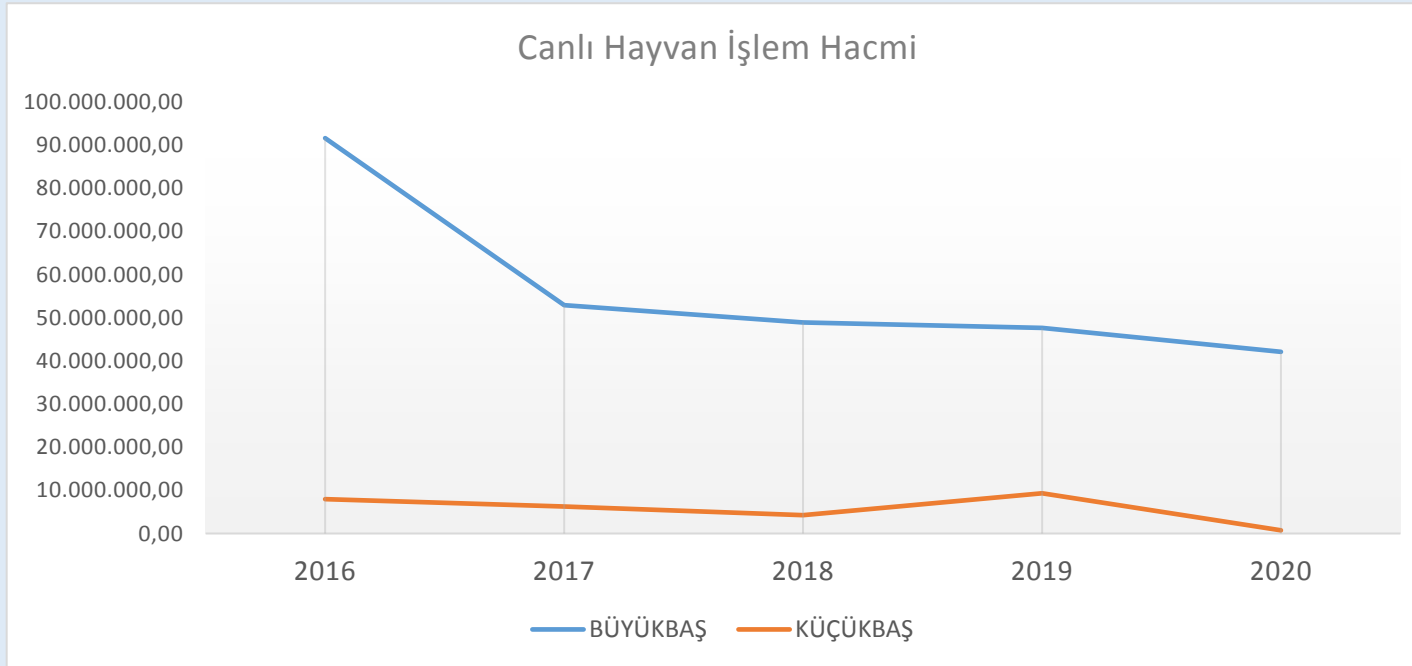
Buğdayda Son 5 Yılın İşlem Hacmi





CANLI HAYVAN BAZINDA SON 5 YILIN İŞLEM HACMİ VE GRAFİĞİ

	2016	2017	2018	2019	2020
BÜYÜKBAŞ	91.654.666,89	52.924.371,41	48.952.942,92	47.658.411,54	42.119.635,14
KÜÇÜKBAŞ	7.978.770,39	6.238.270,78	4.270.269,60	9.325.002,76	744.099,93



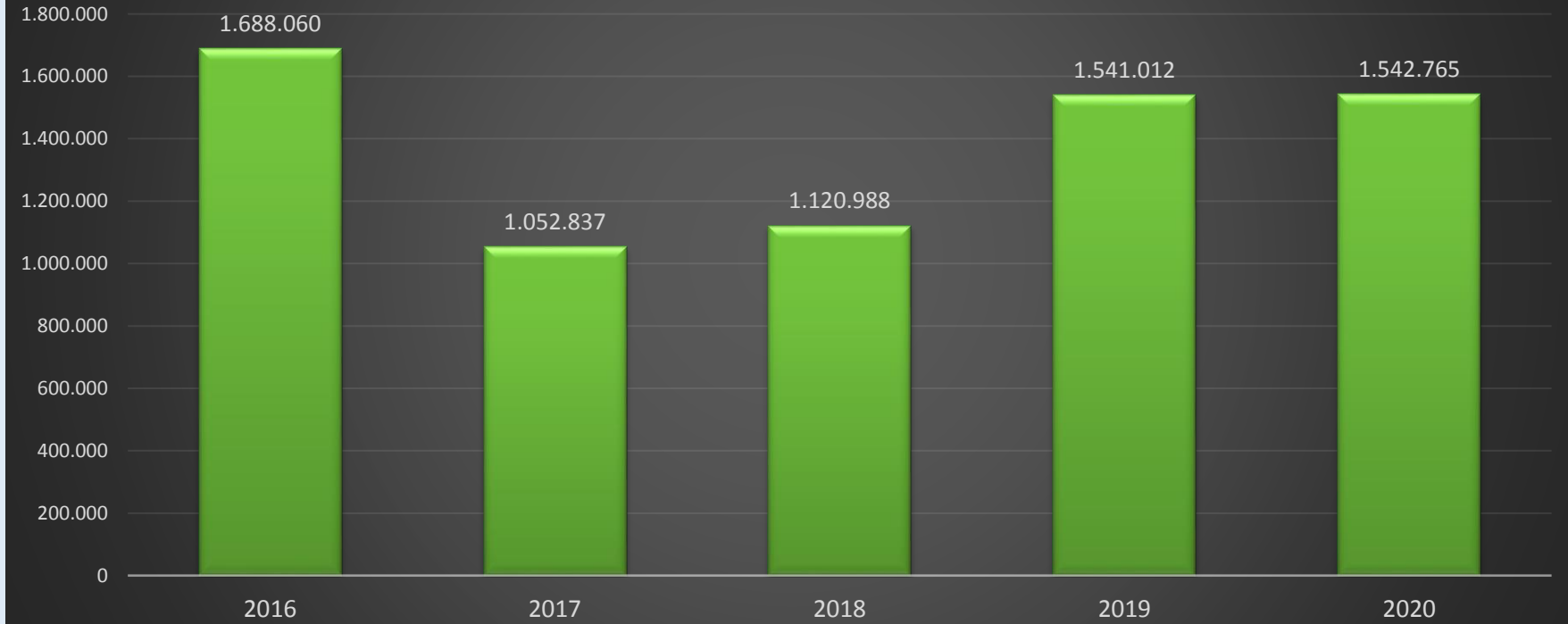


SON 5 YILIN LEBLEBİ İŞLEM HACMİ VE MİKTARI

YIL	İŞLEM MİKTARI (KG)	İŞLEM HACMİ (TL)	ORTALAMA FİYAT
2016	1.688.060	15.290.359,30	9,06
2017	1.052.837	14.375.131,57	13,65
2018	1.120.988	12.910.814,51	11,52
2019	1.541.012	16.278.204,19	10,56
2020	1.542.765	17.715.437,36	11,48



İŞLEM MİKTARI (KG)



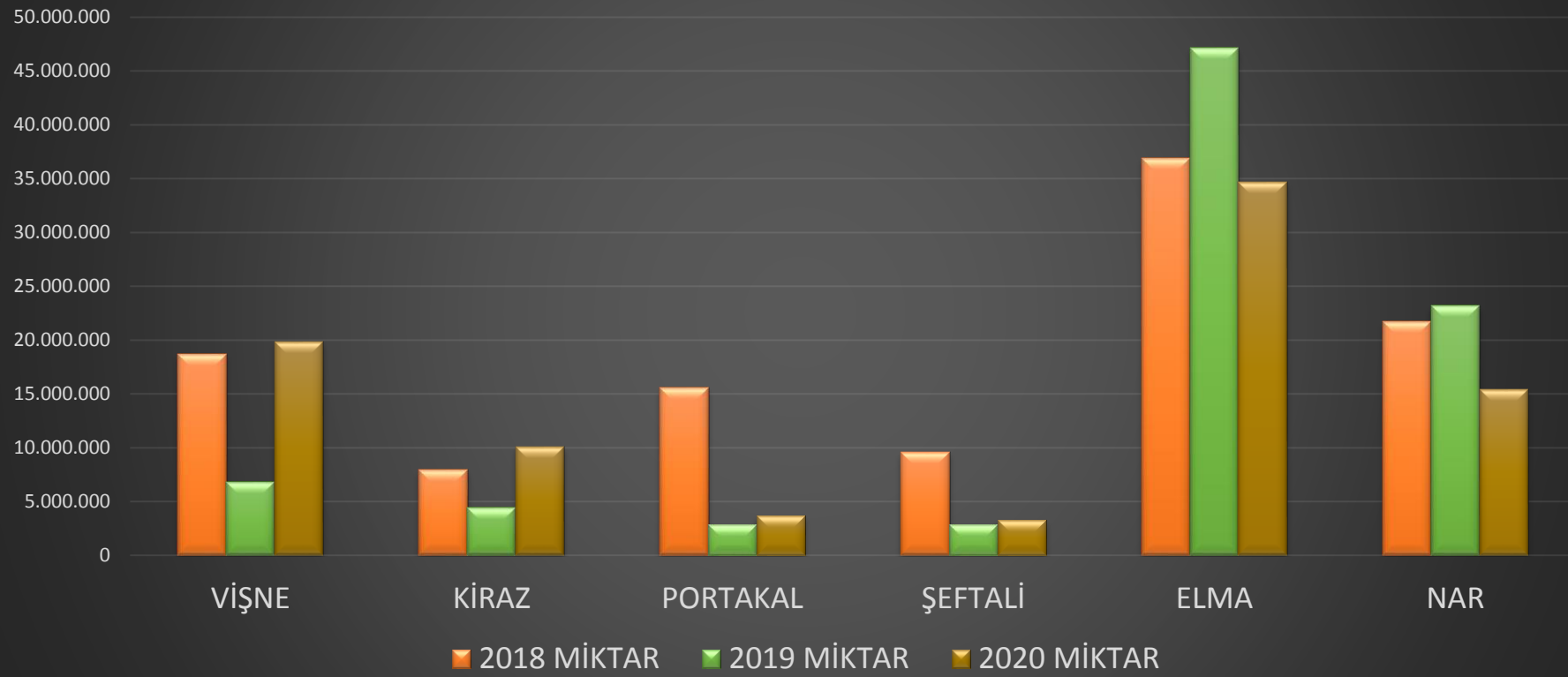


EN ÇOK İŞLEM GÖREN MEYVELERİN İŞLEM MİKTARI VE HACİMLERİNİN ANALİZİ

ÜRÜN	2018		2019		2020	
	MİKTAR	İŞLEM HACMİ	MİKTAR	İŞLEM HACMİ	MİKTAR	İŞLEM HACMİ
VIŞNE	18.705.923	32.385.584,07	6.834.468	18.972.981,59	19.812.848	57.524.342,97
KIRAZ	7.916.322	8.574.353,10	4.388.048	10.273.634,66	10.042.662	24.745.151,93
PORTAKAL	15.582.435	5.356.961,13	2.836.301	1.087.903,28	3.696.145	3.511.760,53
ŞEFTALİ	9.567.031	4.505.635,67	2.849.474	2.564.578,25	3.303.506	3.397.718,88
ELMA	36.912.906	16.668.920,42	47.130.771	31.957.334,47	34.645.298	22.504.429,42
NAR	21.724.783	15.596.464,14	23.191.325	18.809.495,53	15.374.374	17.865.742,37

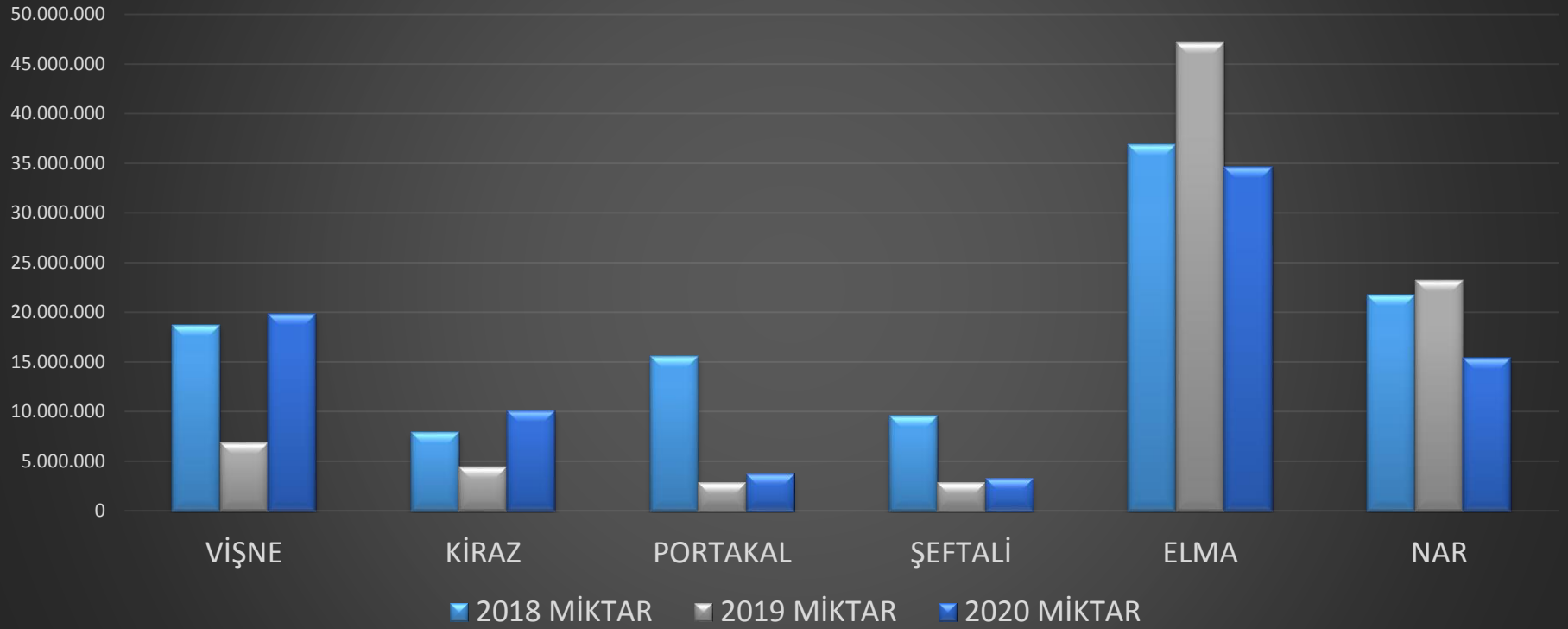


İŞLEM HACMİ





İŞLEM MİKTARI



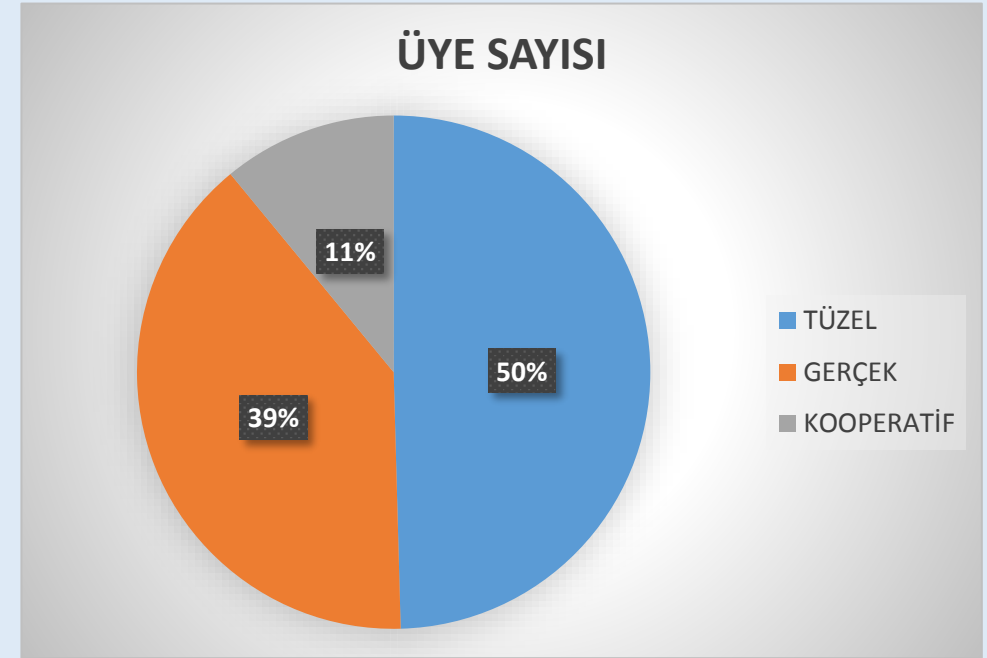


2020 YILI ÜYE İSTATİSTİKLERİ



2020 YILI ÜYE SAYILARI DAĞILIMI

ÜYE TİPİ	ÜYE SAYISI	ORAN
TÜZEL	113	50%
GERÇEK	90	39%
KOOPERATİF	25	11%
TOPLAM	228	





2020 YILI TESCİL İŞLEM SAYILARI

2020	
AY	İŞLEM SAYISI
OCAK	492
ŞUBAT	473
MART	498
NİSAN	412
MAYIS	318
HAZİRAN	308
TEMMUZ	382
AĞUSTOS	536
EYLÜL	502
EKİM	470
KASIM	507
ARALIK	500
TOPLAM	5398

